



EMBERLUX



2023 | ISSUE 01



Royal Shakespeare Theatre, Stratford-upon-Avon

Organise your space, elevate your style!

Creating a feature wall with built-in storage is a great solution for your room. Using a variety of materials and accessories, you can create a unique and striking look.

Our **EMBERLUX** cabinet range has been formed to offer a new way of creative living. Our range of bespoke furniture enables you to have a tidy and stylish home life, in open-plan kitchen areas, living-rooms, bedrooms, home-offices or conservatories.

Founded in 2005 in Stratford-upon-Avon, CK Fires Ltd are a multi-award-winning manufacturer. Our Evonic Fires brand is proud to produce a range of British built electric appliances and are considered as one of the most technically advanced manufacturers in the world. Our range has a heating solution to suit any interior, with a variety of styles, sizes and flame effects to choose from.

PLEASE NOTE: EMBERLUX prides itself on constant development and innovation. We therefore reserve the right to alter the specification of any EMBERLUX product without formal notice. The images in this brochure are produced using photography and CGI. Although the utmost care has been taken to accurately portray our products, we always advise a viewing in person at an approved EMBERLUX stockist's showroom.



|
“We strive to design and deliver
sustainable products that are
aspirational and driven by
technology through innovation.”

|
ANDREW COX | MANAGING DIRECTOR



UK MADE

EMBERLUX collaborates with market leading UK-based suppliers to produce high quality cabinetry for our installations. Customers can be confident in choosing an EMBERLUX media unit, you are supporting British jobs, reducing your carbon footprint through shorter supply chains, and investing in a product that is built to last.



SUSTAINABILITY

EMBERLUX focuses on creating media wall solutions with minimal environmental impact by using eco-friendly materials, reducing waste, and implementing energy-efficient production processes. Our company, CK Fires, have been certified ISO:14001 and ISO:9001 compliant, meaning that we are more conscious of our supply chain and where components are sourced.



NIBE GROUP MEMBER

CK Fires Ltd is a group member of NIBE, a Swedish multinational company that specialises in energy-efficient and environmentally friendly heating solutions. NIBE is a world leader in heating technology, with a wide range of products and solutions for homes, commercial buildings, and industrial applications.



Stockists Network

EMBERLUX has a network of dedicated stockists. Visit the stockists section of our website which features a detailed search engine to locate your nearest dealer. You can even narrow the search down to find a particular model using our product filter tool.

www.emberlux.co.uk



The Suite Range

The suite range of furniture is very versatile and available in a range of sizes to suit any room area.

Adding an electric fire provides a comfortable and attractive solution for those looking to add warmth and style to their living space.

Optional extras, of quartz or granite shelf's, door handles, panelling and lighting, will elevate the appearance of our furniture which has been designed to be a stand out feature in your home.

Options for the suite range can be found on pages 22 - 27.

| Bexley |



SMALL | Venice Doors in Matt Kombu Green



MEDIUM | Venice Doors in Supermatt Cashmere



LARGE | Richmond Doors in Matt Colonial Blue

Lambeth



SMALL | Valore Doors in Driftwood Light Grey



LARGE | Valore Doors in Evora Stone Graphite

| Harrow |



SMALL | Richmond Doors in Supermatt Light Grey, with optional shelving



| Islington |



SMALL | Venice Doors in Matt Kombu Green



MEDIUM | Valore Doors in Evora Stone Graphite



|
Teddington
|



SMALL | Venice Doors in Matt Sage Green, with optional shelving



MEDIUM | Venice Doors in Supermatt Cashmere



LARGE | Venice Doors in Matt Black

Cabinet Options

These models offer three door types: Valore, Richmond, and Venice. The Valore has a textured finish and square cut edges whereas the Richmond and Venice are smooth to the touch and have delicate curved edges. All doors have soft close hinges and are handleless so you simply push to open. A choice of handles are available as an optional extra, see page 25 for details. Available in a range of colour's for the doors and end panels, you can also choose from three internal colour's for your cabinet. A top pelmet and lighting pelmet, which sits underneath the top section of cabinets, are available as an optional extra for the Bexley suites. Also, shelving can be added to the Harrow and Teddington small models.

INTERNAL CABINET COLOUR'S



Urban Oak



Pebble Grey



Dusk Grey

PELMETS - BEXLEY SUITES



Top Pelmet



Lighting Pelmet



Harrow & Teddington smalls

SHELVING



Valore

DOOR'S



Richmond



Venice

VALORE COLOUR'S



Evora Stone Graphite



Driftwood Light Grey



Kendal Oak

RICHMOND AND VENICE COLOUR'S



Matt Black



Matt Colonial Blue



Matt Kombu Green



Matt Mussel



Matt Sage Green



Supermatt Cashmere



Supermatt Light Grey



Urban Oak



Paintable Vinyl

Unpainted cabinets allow you to choose and apply your own paint colour to match or contrast with your home decor.

PLEASE NOTE: Colour swatches shown above are for reference only and a physical swatch should be viewed.

Shelf Options

Both Quartz and Granite are extremely durable materials, making them among the best choices you can find.

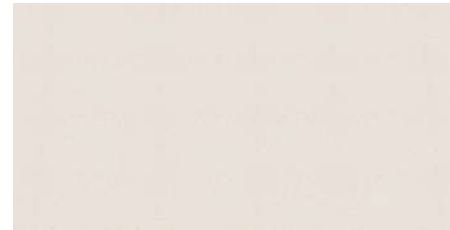
GROUP ONE



Boreas Quartz



Oslo Quartz



Arcadia Quartz

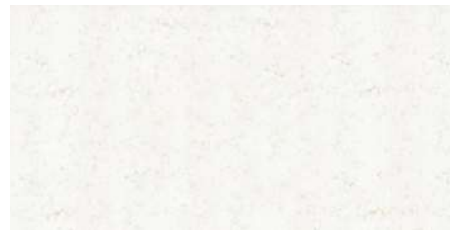


Black Granite

GROUP TWO



Brittanica Quartz



Sineda Quartz



Nordic Grey Quartz

GROUP THREE



Concrete Terreno Quartz (matt finish)



Petra Concrete Quartz (matt finish)

PLEASE NOTE: Colour swatches shown above are for reference only and a physical swatch should be viewed.

Fire and Lighting Options

ELECTRIC FIRES

All models below come with continental silver birch or woodland logs and SCHOTT® clear float glass as standard. Log upgrades are available and UHD glass is an optional extra for the Halo range.



ISLINGTON RANGE

850 SL Fire |
E-lectra and Volante



SMALL MODELS

1030 Fire |
Halo and E-series



MEDIUM MODELS

1500 Fire |
Halo, E-series, E-lectra
and Volante



LARGE MODELS

1800 Fire |
Halo, E-series, E-lectra
and Volante

E-LLUMINATE LIGHTING KIT

Feature lighting has now become an essential factor in the design of a living space, with many consumers choosing to integrate lighting into their room to accent their fireplace, television, or simply add an extra light source. Try adding the new App. controlled, e-Illuminate smart lighting for that extra wow factor.



Visit the Evonic Fires website for further information - www.evonicfires.co.uk

Door Handle Options

Cabinet handles and knobs can change the appearance of a room or furniture. From the material and texture to the colour and shape, decorative handles are the ultimate finishing touch.

U PULL HANDLE

Available in two sizes - 200mm and 500mm



Matt Black



Polished Chrome



Brushed Brass



Brushed Copper

CUP HANDLE



Black Nickel



Polished Nickel



Brushed Brass



Antique Copper

KNOB



Black Nickel



Polished Nickel



Brushed Brass



Antique Copper

FIXINGS INCLUDED

Panelling Options

Adding back panelling to a cabinet can be a great way to accentuate its design and give it a finished look.



Slatted Natural Oak



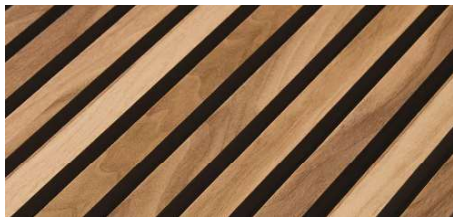
Evora Stone Graphite



Driftwood Light Grey



Kendal Oak



Slatted Walnut



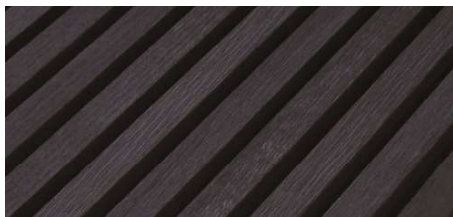
Matt Black



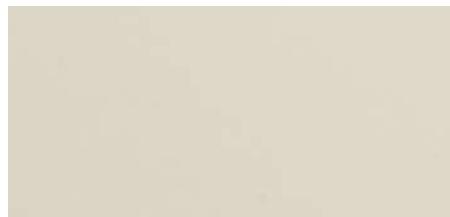
Matt Colonial Blue



Matt Kombu Green



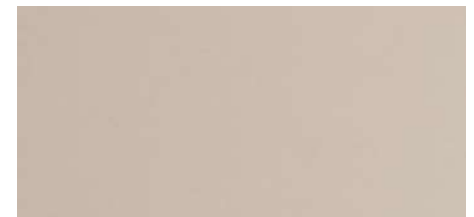
Slatted Charcoal Black



Matt Mussel



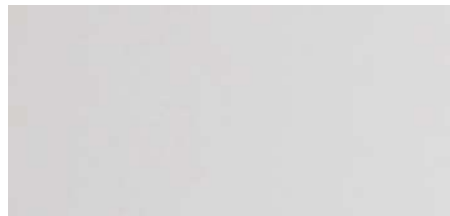
Matt Sage Green



Supermatt Cashmere



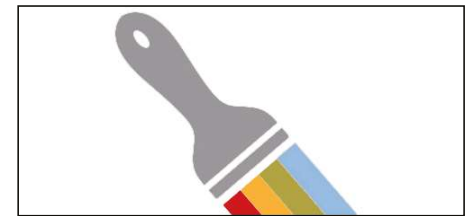
Slatted Grey Oak



Supermatt Light Grey



Urban Oak

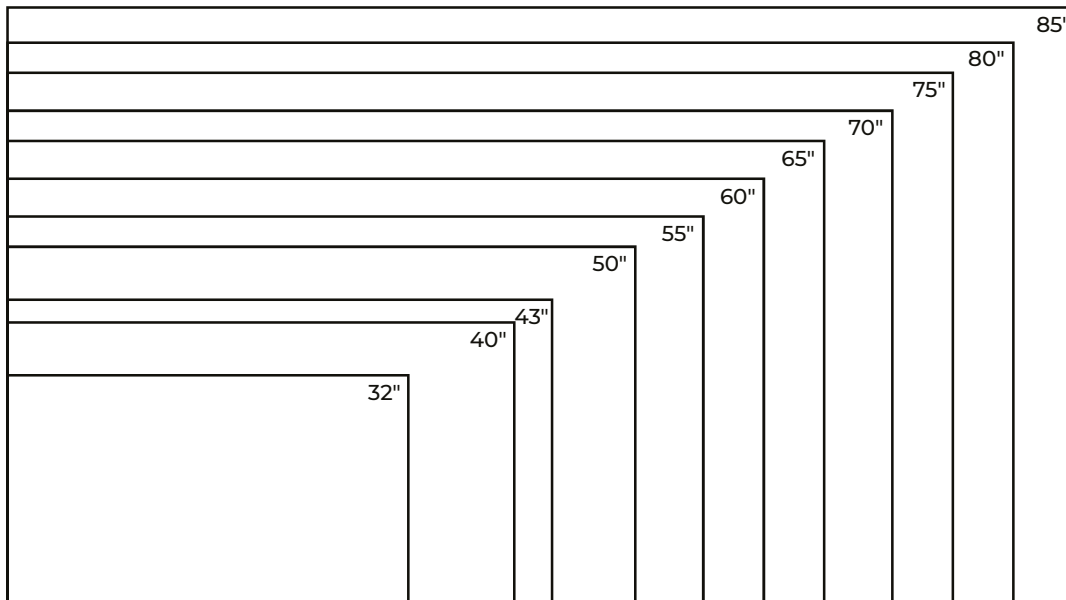


Paintable Vinyl

PLEASE NOTE: Colour swatches shown above are for reference only and a physical swatch should be viewed.

TV Options

Choosing the ideal size TV for your cabinet is a vital aspect to consider. Below is a diagram and table to assist you, dimensions of the suites can be found on page 29. You can also make your TV stand out by adding a back panel, spaced off the wall by 32mm, which you can match to your cabinet door colour or select a contrasting option. Due to the design of the Lambeth suite, a TV is not an option for this model.

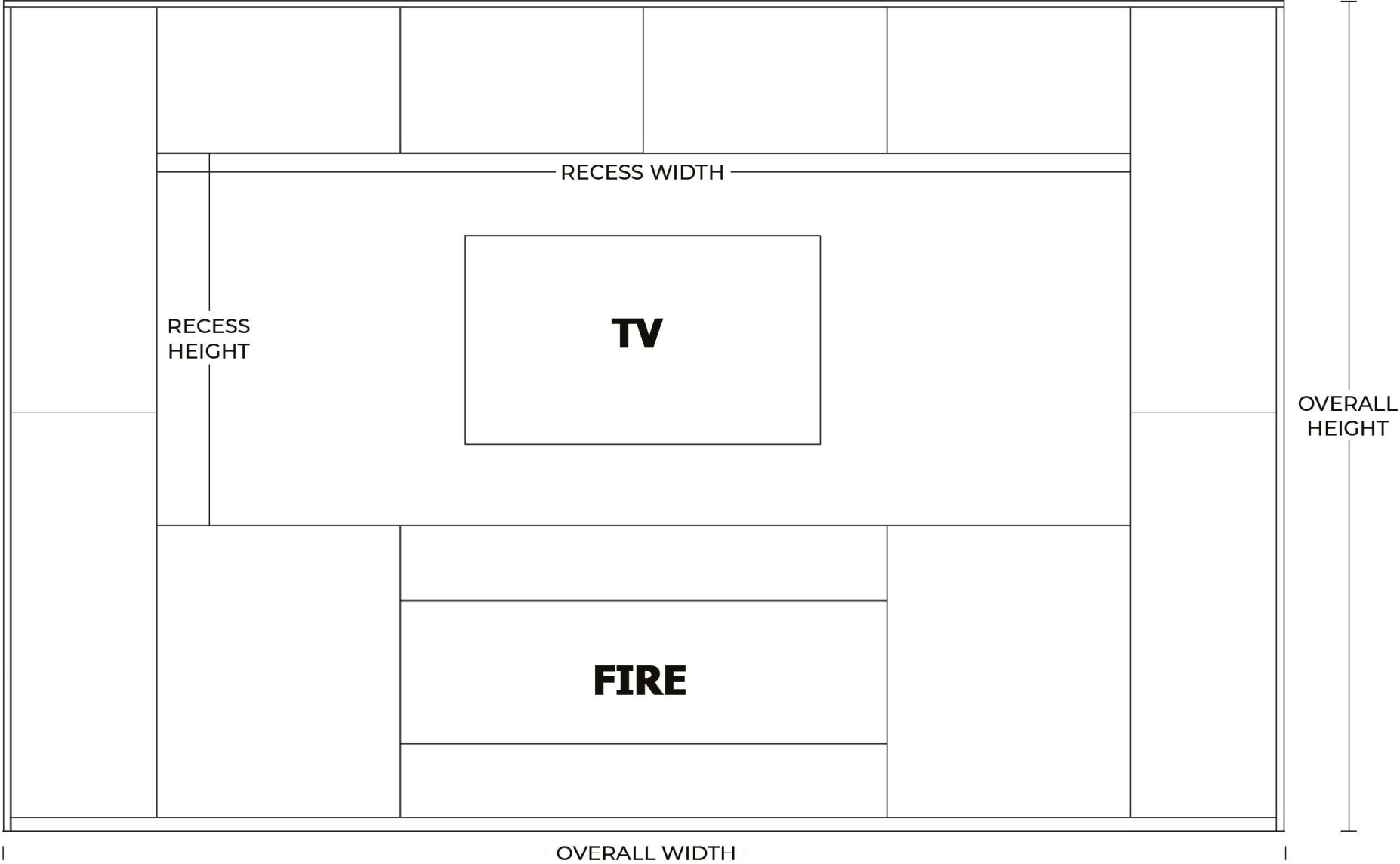


TV SIZE	TV WIDTH	TV HEIGHT	PANEL WIDTH	PANEL HEIGHT
32"	709mm	399mm	909mm	599mm
40"	886mm	498mm	1086mm	698mm
43"	953mm	536mm	1153mm	736mm
50"	1107mm	622mm	1307mm	822mm
55"	1217mm	686mm	1417mm	886mm
60"	1328mm	747mm	1528mm	947mm
65"	1440mm	810mm	1640mm	1010mm
70"	1549mm	871mm	1749mm	1071mm
75"	1661mm	935mm	1861mm	1135mm
80"	1770mm	996mm	1977mm	1196mm
85"	1882mm	1059mm	N/A	N/A



TV with back panel

Dimensions



| Dimensions |

PAGE NO.	MODEL	OVERALL HEIGHT	OVERALL WIDTH	OVERALL DEPTH	RECESS HEIGHT	RECESS WIDTH	FIRE MODEL	NO. OF SLATTED PANELS (OPTIONAL)
12	Bexley small	2250mm	2437mm	350mm	1138mm	2437mm	1030	2
12	Bexley medium	2250mm	3037mm	350mm	1138mm	3037mm	1500	2
13	Bexley large	2250mm	3637mm	350mm	1138mm	3637mm	1800	3
14	Lambeth small	2140mm	2037mm	474mm	N/A	N/A	1030	1
15	Lambeth large	2170mm	3037mm	474mm	N/A	N/A	1800	1
16	Harrow small	2140mm	2037mm	474mm	1131mm	963mm	1030	1
17	Harrow large	2170mm	3037mm	474mm	1131mm	2000mm	1800	3
18	Islington small	2210mm	2437mm	350mm	1795mm	1547mm	850SL	4
18	Islington medium	2210mm	3037mm	350mm	1795mm	2747mm	850SL	5
19	Islington large	2210mm	3637mm	350mm	1795mm	2147mm	850SL	6
20	Teddington small	2032mm	1957mm	350mm	882mm	1162mm	1030	1
20	Teddington medium	2032mm	2557mm	350mm	882mm	1762mm	1500	2
21	Teddington large	2032mm	3157mm	350mm	882mm	2362mm	1800	2



The Modular Range

Modular furniture with an electric fire is a great option for those who want to add warmth and style to their living space. This type of furniture is designed to be flexible and fit the changing needs of your home.

These pieces can be configured in a variety of ways to suit your specific needs, and the electric fire is incorporated into the design as a functional and aesthetic element.

Options for the modular range can be found on pages 36 - 37.

Westminster

The Westminster modular unit can be a combination of a chimney breast, with electric fire, bookcase(s), and/or glass shelf unit(s). By having the electric fire integrated into the chimney breast, the Westminster offers both warmth and style to a room. The bookcase(s) and/or glass shelf unit(s) provide additional space for displaying decorative items and storing books, making the Westminster a functional and stylish piece of furniture that can be customised to fit a specific space.



CHIMNEY BREAST |
shown in Snow White



BOOKCASE |
shown in Snow White



GLASS SHELF UNIT |
shown in Snow White



COMBINED UNITS | shown in Snow White with optional pelmet

Kingston

The Kingston modular unit is a combination of a chimney breast with electric fire and unit, shelf top and a choice of a single shelving unit, double shelving unit, single cupboard unit and double cupboard unit. This provides ample storage space and display area, making the Kingston a functional and stylish piece of furniture that can be customised to fit a specific space.



Chimney breast and fire unit shown in Graphite



Chimney breast and fire unit with a double shelving unit shown in Graphite



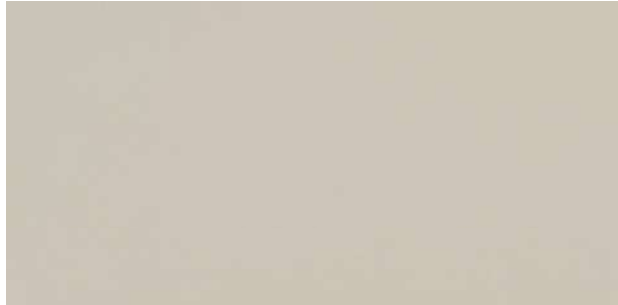
Chimney breast and fire unit with a double shelving unit and double cupboard unit shown in Graphite

Cabinet Options

CABINET COLOURS



Snow White



Pashmina



Graphite



Concrete Flow



Charcoal Flow



Silk Flow

PLEASE NOTE: Colour swatches shown above are for reference only and a physical swatch should be viewed.

PELMET



Optional pelmet available for the top of both Modular models

KNOB



Black Nickel



Polished Nickel



Brushed Brass



Antique Copper

FIXINGS INCLUDED

Fire and Lighting Options

ELECTRIC FIRES

The models below come with continental silver birch or woodland logs and SCHOTT® clear float glass as standard. Log upgrades are available and UHD glass is an optional extra for the Halo range.



WESTMINSTER

800 Fire |

Halo, E-series, E-lectra and Volante



KINGSTON

1250 Fire |

Halo, E-series, E-lectra and Volante

E-LLUMINATE LIGHTING KIT

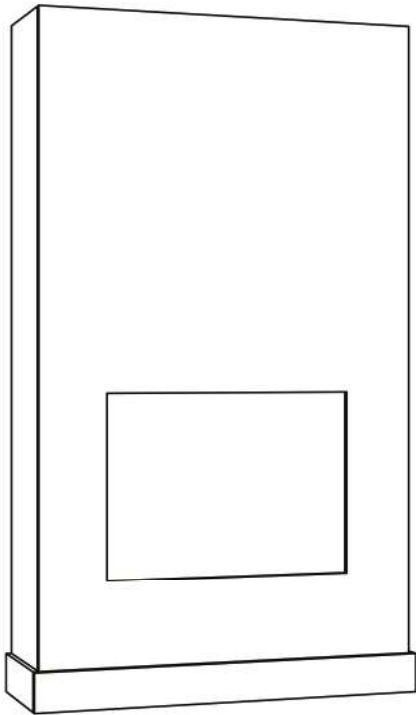
Feature lighting has now become an essential factor in the design of a living space, with many consumers choosing to integrate lighting into their room to accent their fireplace, television, or simply add an extra light source. Try adding the new App. controlled, e-Illuminate smart lighting for that extra wow factor.



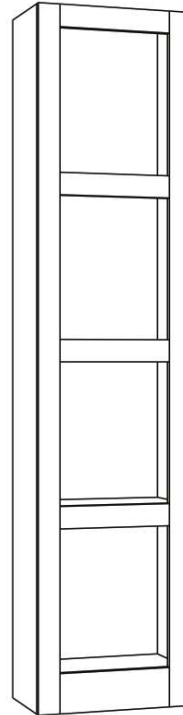
Visit the Evonic Fires website for further information - www.evonicfires.co.uk

Westminster Dimensions

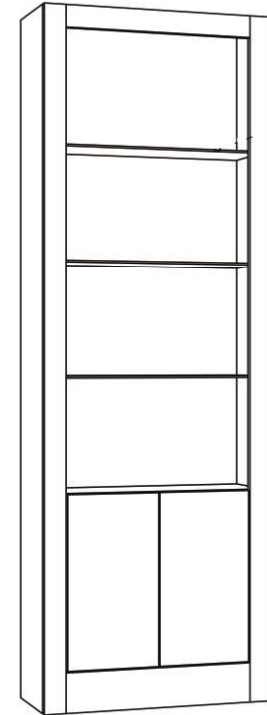
CHIMNEY BREAST



BOOKCASE



GLASS SHELVING UNIT



HEIGHT	WIDTH (excluding skirting board)	DEPTH (excluding skirting board)
2200mm	1250mm	398mm

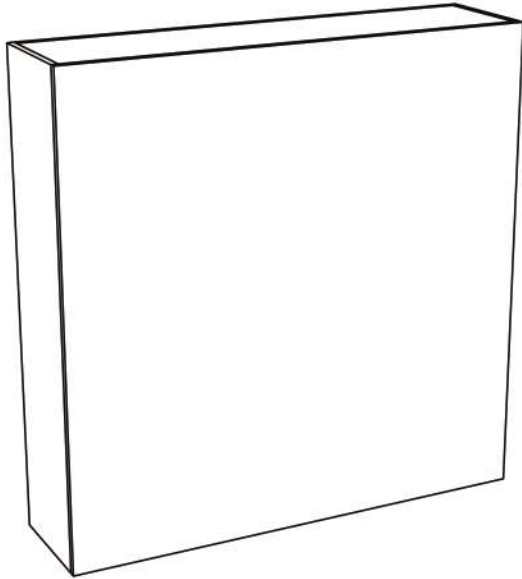
HEIGHT	WIDTH	DEPTH
2200mm	500mm	298mm

HEIGHT	WIDTH	DEPTH
2200mm	750mm	298mm

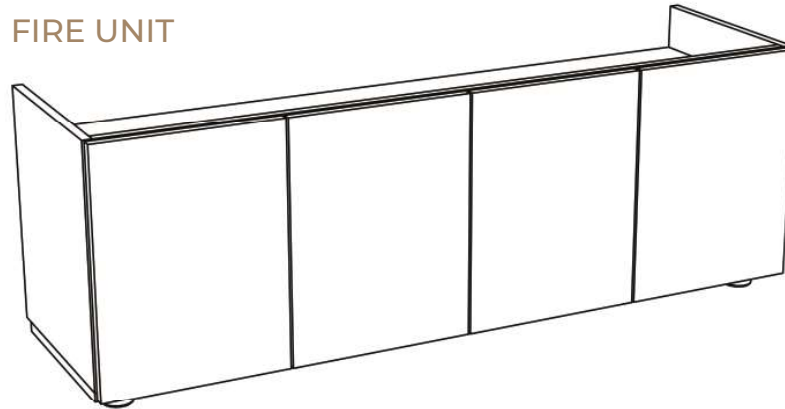
6mm toughened glass shelves x3

Kingston Dimensions

CHIMNEY BREAST

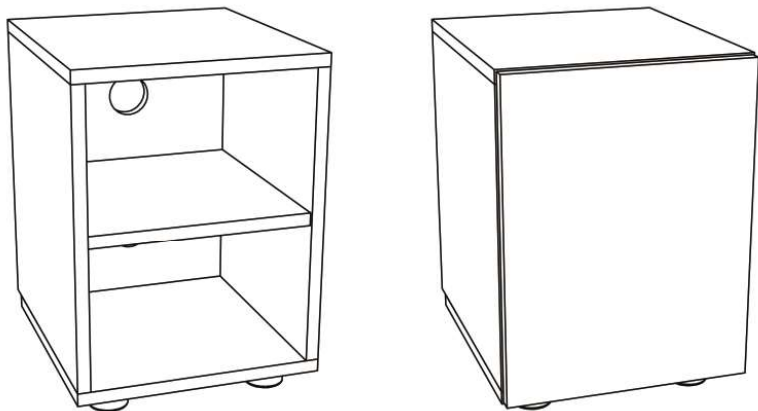


FIRE UNIT

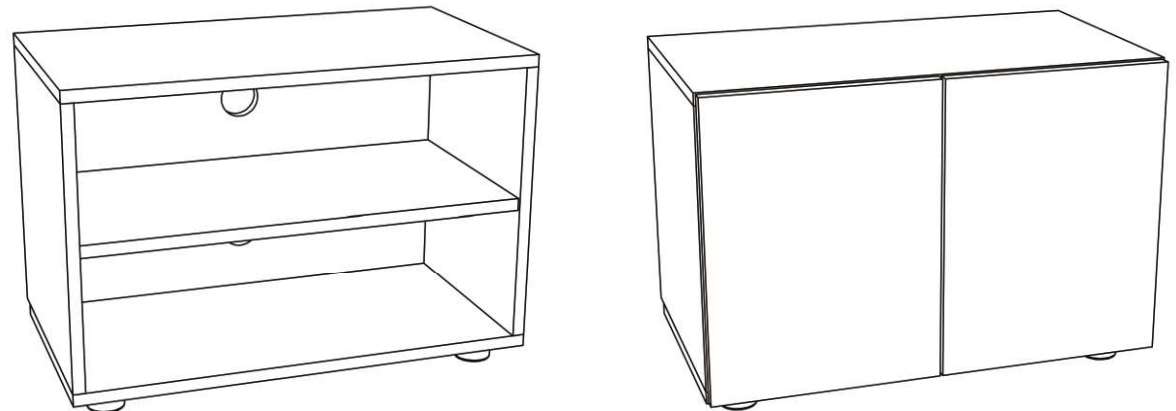


	HEIGHT	WIDTH	DEPTH
CHIMNEY BREAST	1300mm	1296mm	328mm
FIRE UNIT	482mm incl. feet	1380mm	398mm
SINGLE SHELVING UNIT	482mm incl. feet	345mm	380mm
SINGLE CUPBOARD UNIT	482mm incl. feet	345mm	398mm
DOUBLE SHELVING UNIT	482mm incl. feet	690mm	380mm
DOUBLE CUPBOARD UNIT	482mm incl. feet	690mm	398mm

SINGLE SHELVING UNIT AND CUPBOARD



DOUBLE SHELVING UNIT AND CUPBOARD





EMBERLUX

