





#mybritishfire

BRITISH  
FIRES

## // WELCOME TO BRITISH FIRES

Uncompromising Quality. The design and development has this one mindset which drives us to deliver exceptional products.

Our aim is simple – to help you create a beautiful and vibrant environment for you to enjoy.







# // DETAIL IS EVERYTHING

The inspiration to develop the Winchester suite was triggered by asking ourselves a simple question: How can we combine our award winning LED flame-effect technology with a stunning display that compliments the modern home?

The answer was to design a marble-effect suite that is sleek, solid, and timeless.

We thoughtfully obsessed over every detail in order to arrive at a convincing marble-effect design, one that can serve as a centre piece of any home.



## // SEAMLESS JOINTS

A suite made of the latest in MDF technology is the only way to dress the Winchester fire. Light in weight, and strong in both appearance and durability, the chamfered-edge design is a detail we added to bring a touch of charm to any room.

The MDF construction methods are eco-friendly and the materials that are used are sustainable.

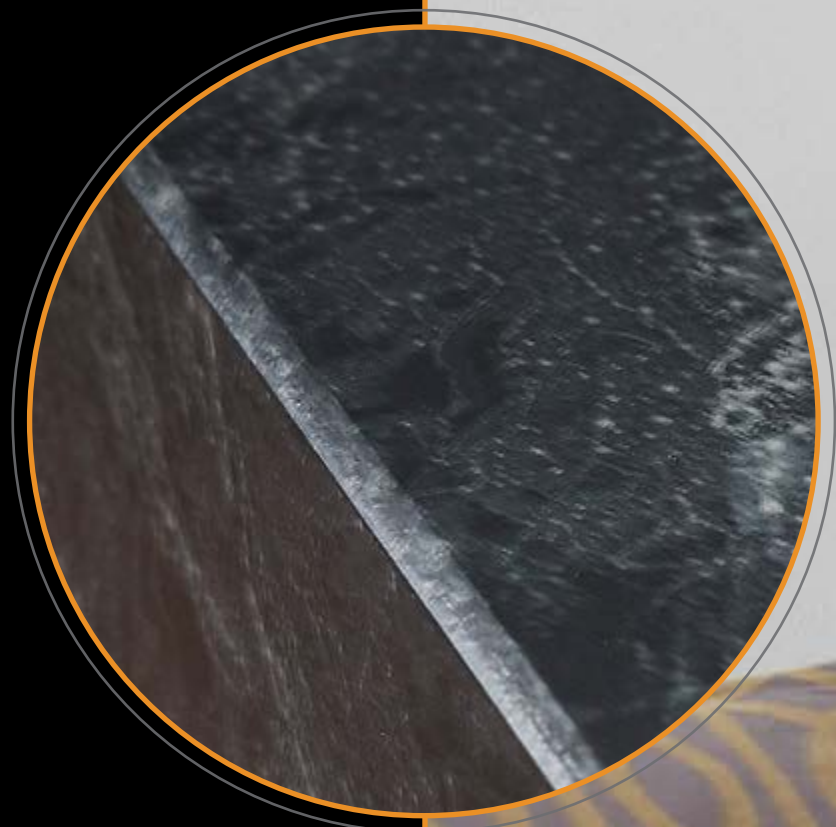
Our premium MDF is moisture resistant with an extra smooth finish. The seamless design allows us to paint the marble-effect onto the solid-frame units.





# // HAND-PAINTED

It looks like marble but, it isn't. By using a meticulous hand painting technique to create the marble-effect we are able to give the appearance of solid marble on a light, yet strong MDF suite.



Choose between White or Grey marble-effect. Either way you won't believe it's not real marble.



## // FOREST VIEW

The signature logs that are inspired from the rural New Forest in Hampshire, UK, sit comfortably on an underlay of wood chippings and husk which creates an authentic earthy feel.

A hand painted finish brings the log to life and subtly delivers a real presence.

#mybritishfire

// 10

## // DIAMOND LIGHT

A dynamic way to show how light can enhance the visual aspect of a flame effect – this is something magical. The fuel bed colour changes takes you through a journey of tranquillity. Alternatively, you can choose between the orange, pink, or blue light setting to create a certain mood.

// 11

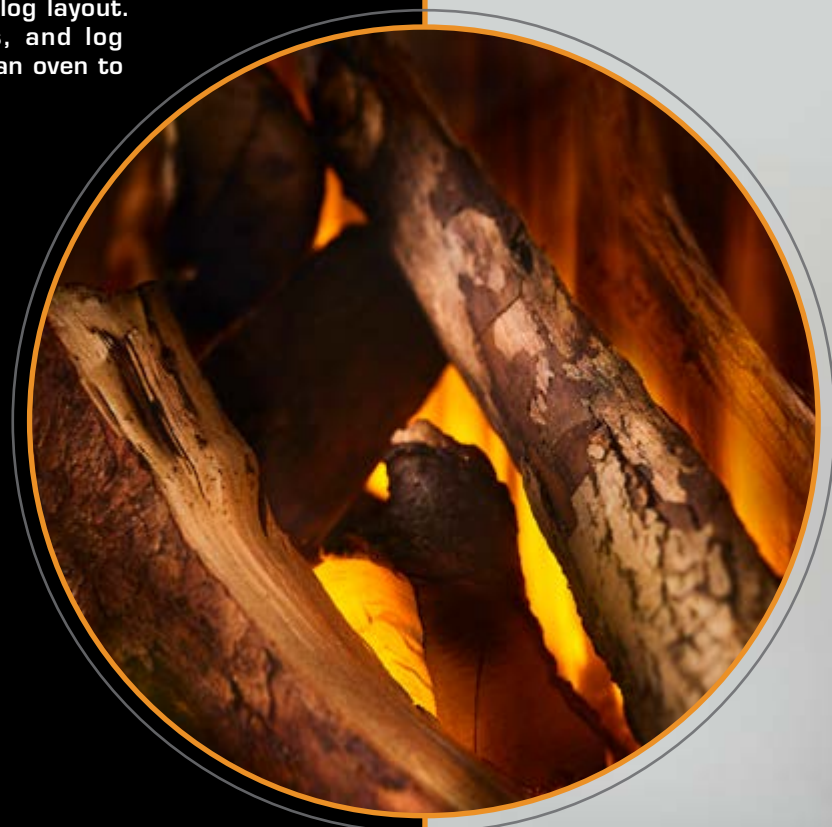


# // DELUXE REAL LOGS

Upgrade your view and create the ultimate experience with our new Deluxe Real Logs.

Each Deluxe Real Log is unique and artisanly crafted using actual logs found in nature. They really enhance an already prominent statement piece in any room will take any viewer by surprise — especially, when you tell them that they are real logs.

The development process of the Deluxe Real Logs fuel bed begins by selecting different sized logs and branches to create a natural log layout. Then placed on a forest floor bed comprised of bark, twigs, and log remnants. A resin mix is then added into the base and cured in an oven to permanently fix the logs.





Room air is drawn across the top outlet

Unique and discreet heater outlet

The fan controls the heat and distributes it widely into the room

Minimal glass recess

Two-way mirrored rear glass

# // HOW AIR CURTAIN TECHNOLOGY WORKS

Our \*Air Curtain Technology (ACT) is the process of circulating cooler air in and dispersing warmed air back into the room via our dual-outlet system, which is discreetly placed above the glass, creating an efficiently heated space.

AIR CURTAIN TECHNOLOGY®



\*Patent Pending



## // BE IN CONTROL

Let the remote do the work. The Winchester is equipped with a remote control that bridges the connection between you and your fire. Each button displays an icon that clearly identifies the function to engage with the fire and explore the features.

### Open window detection

If there is a sudden drop in temperature of 5°C or more within a ten minute period, the heater will automatically turn off to preserve energy. Look out for the OP sign on the digital display to show this has been activated. The heater will start up again once the temperature in the room rises or you choose to manually turn it back on.

### Thermostatic heating

The Air Curtain Technology® heater system is thermostatically controlled using the remote handset which displays the current setting on the LCD screen. Choose a temperature between 17° and 27°C and the fire will do the work to heat the room to your desired temperature.



### Flame control

Choose from four settings to adjust the brightness of the flame to suit your mood. Watch as the flames change brightness and height.

### Down lighting

Select to have the carefully placed spot lights on and see every detail of the fire. Turn them off and you will see how relaxing the fuel bed can really be.

### Fuel bed colour change

Cycle through all of the three colours that each provide a unique style. Can't decide...the cycle setting will flow through all the colours for you.

### Daily and weekly timer

Set the fire to provide you with heat on any day throughout the week. The seven-day programmable calendar will remember your settings and will activate the thermostatic heater on each day and every week for when you need the New Forest fire the most.

### Timer boost

A range of settings between one and nine hours can be selected to turn the heater on for a desired length of time.



# // WINCHESTER ELECTRIC SUITE

## // Dimensions:

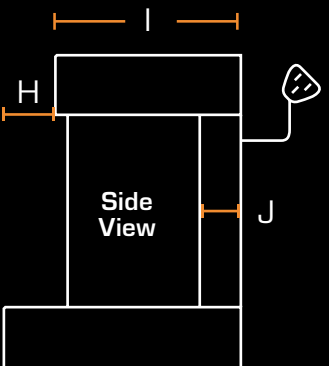
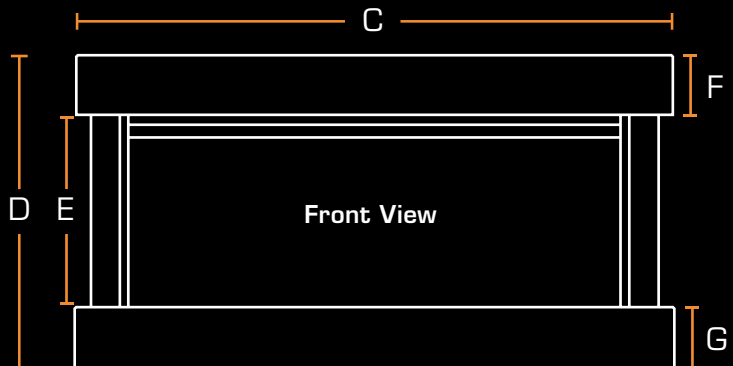
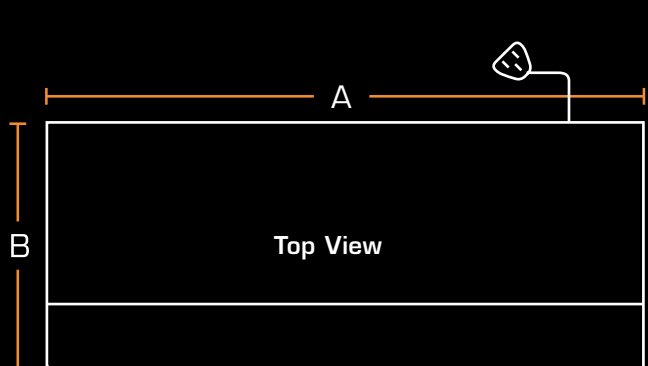
A	1200mm
B	404mm
C	1200mm
D	611mm
E	331mm
F	140mm
G	140mm
H	87mm
I	318mm
J	72.5mm

## // Product specifications:

Heat output:	1400W
Supply voltage:	220–240V AC
Rating power:	50Hz
Fuse rating:	13 Amp
Lighting:	LED


## // Product features:

- Easy to install MDF Solid Suite
- 3-pin plug with 1.8m long cord
- All fuel bed items included
- Remote control included




Patent Application Number 1820239.0  
European Patent Application No. 19215407.8  
Installation: Please contact your local British Fires dealer for information on this.

# // CONTACT

 +44 (0) 808 169 9911

 [info@britishfires.com](mailto:info@britishfires.com)

 [www.britishfires.com](http://www.britishfires.com)

 British Fires Ltd  
Unit 10 Avon Trading Park  
Christchurch  
Dorset  
BH23 2BT  
United Kingdom

This brochure was correct at publication; however, as our policy is one of continual development and improvement, specifications may be subject to change. Any such changes will not adversely affect the performance or safety of the appliance.

# // GUARANTEE

3-year guarantee – At British Fires we pride ourselves on quality and performance, so much so that each British Fires electric product is applicable for a 3-year guarantee when purchased from an authorised dealer. We offer a standard 1-year guarantee on every electric product, but to ensure your product is covered for a further 2 years, free registration is required on our website [www.britishfires.com/guarantee](http://www.britishfires.com/guarantee). Full warranty terms and conditions are available to view at [www.britishfires.com](http://www.britishfires.com).

All appliances must be installed in a correctly ventilated space in accordance with the manufacturer's installation instructions and the rules in force. This brochure is for guidance only and is not intended to replace the installation manual, which provides more detailed information. July 2020. British Fires®



YOU MAY ALSO LIKE:

## // BROCKENHURST ELECTRIC SUITE

A close relative of the Winchester, the Brockenhurst Electric Suite features asymmetrical, thinner, shelves that measure 1020mm wide across the top and 1400mm along the bottom. This creates a dynamic and impressive focal point made from the same high-quality MDF with seamless joints. Visually, it offers





